

Building Equitable Systems:

Moving Math from Gatekeeper to Opportunity Gateway



APRIL 16, 2021

Introduction to the Partnership for Los Angeles Schools



Joan Sullivan

Chief Executive Officer
Partnership for Los Angeles Schools

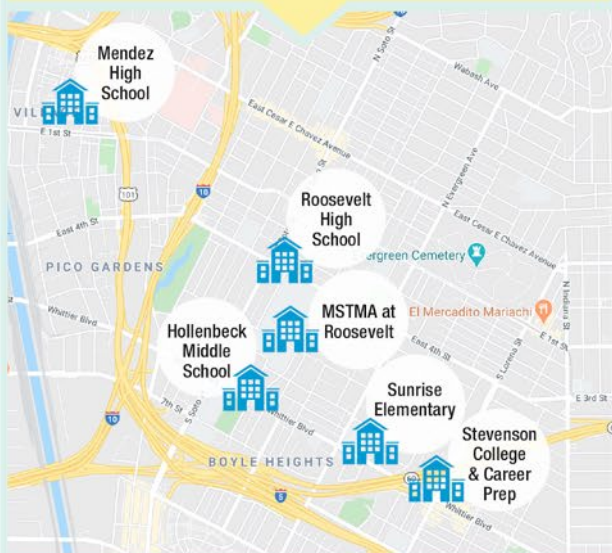
The Partnership's Mission

WE **TRANSFORM** SCHOOLS TO
REVOLUTIONIZE SCHOOL
SYSTEMS, **EMPOWERING**
ALL STUDENTS WITH A
HIGH-QUALITY EDUCATION

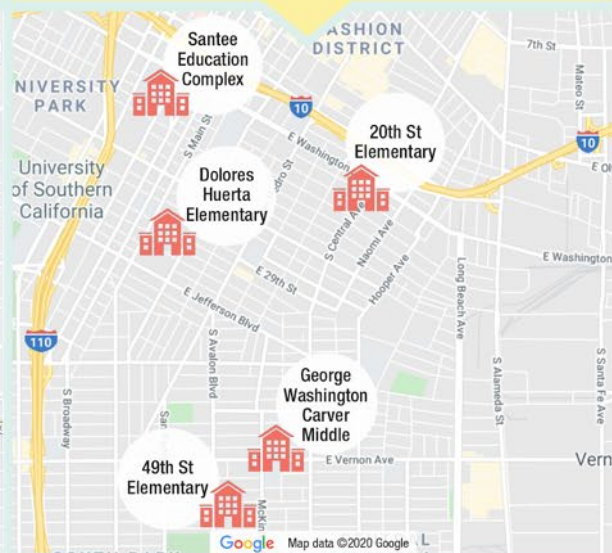


Our 19 Schools

BOYLE HEIGHTS



SOUTH LOS ANGELES



WATTS & WATTS-ADJACENT



Meet the Partnership's Team



Francisco Villegas

VICE PRESIDENT OF SCHOOL
TRANSFORMATION, K-12 MATHEMATICS



Myeisha Phillips

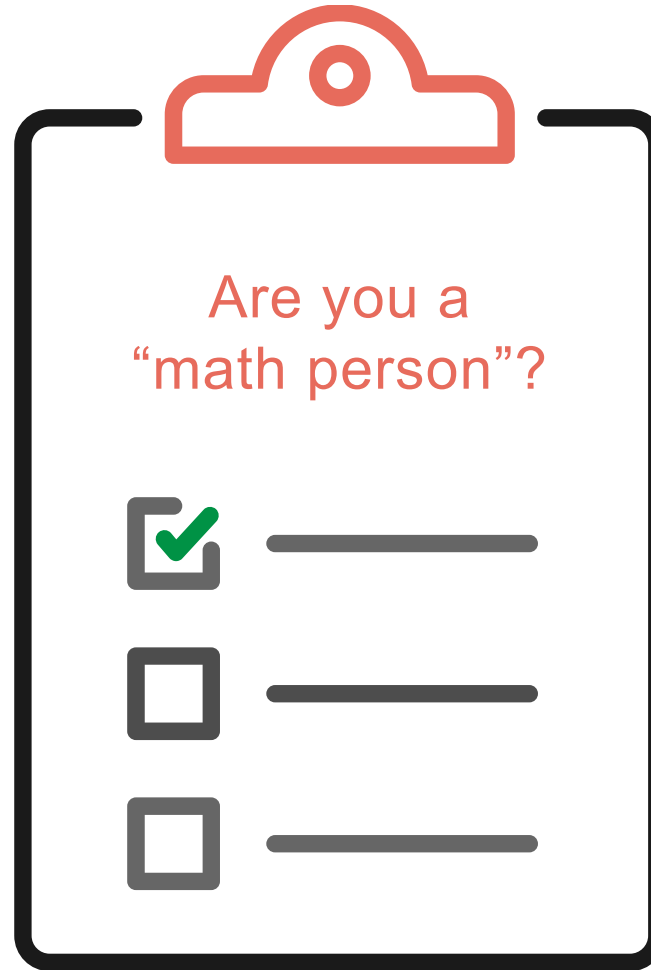
DIRECTOR OF SCHOOL TRANSFORMATION, MATH



Dr. Ian Guidera

CHIEF ACADEMIC OFFICER

Audience Poll



Are you a
“math person”?

☒ _____

☐ _____

☐ _____

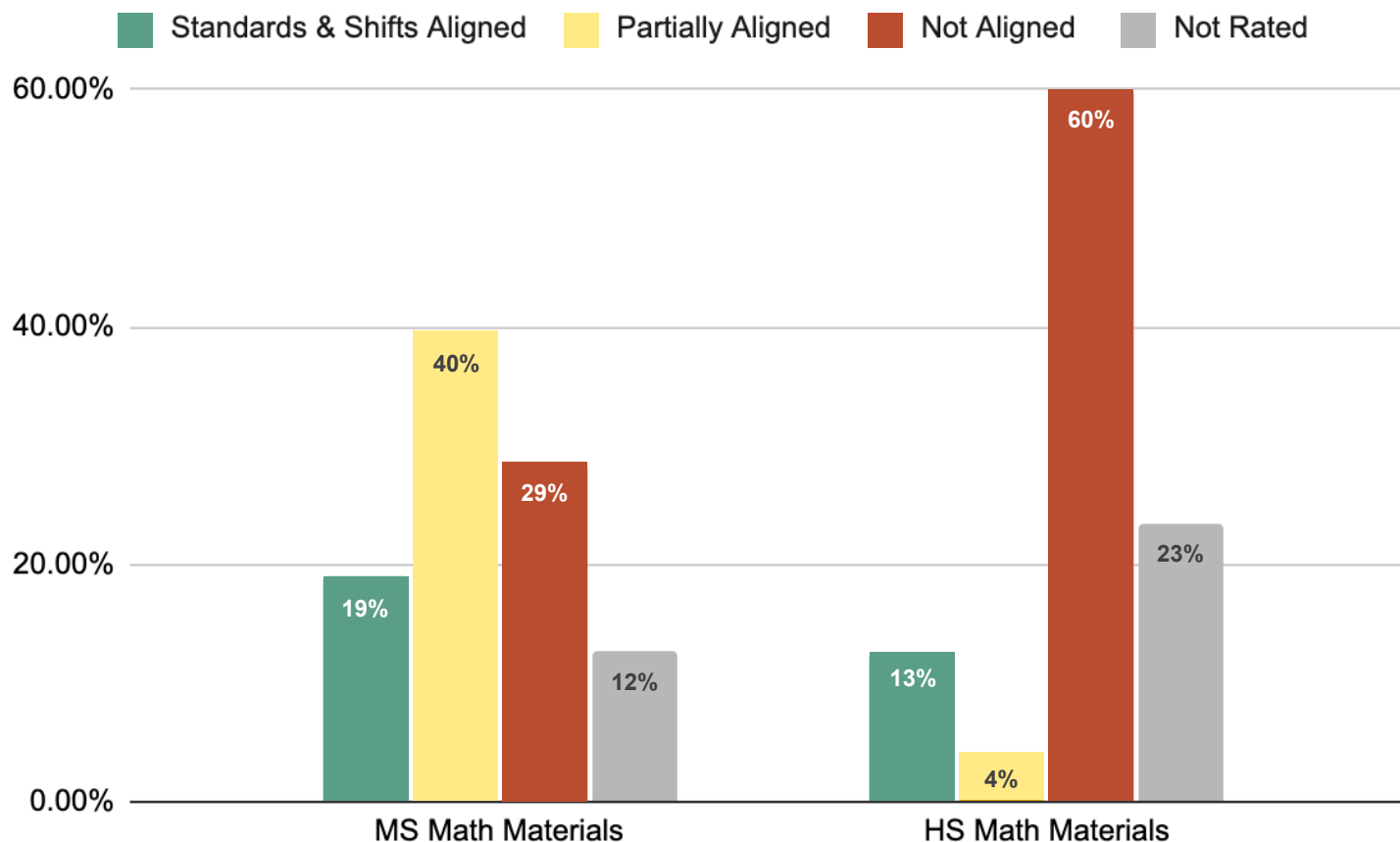
Math Can Be A Problem

- Why do so many students still have unproductive, unsuccessful, and unhealthy experiences in math class?
- Why does math instruction fail to close inequitable achievement gaps in our math classrooms?
- In a nutshell, why is math class still not working for so many students, especially students of color?



Source: *The Mathematics Teacher's Handbook*, 2022

Current State Of U.S. Math Materials



Source: EdSolutions using EdReports ratings

Partnership Teachers Share Insights



What Can We Do About It?

- How do we enable excellent mathematics teaching as the norm across our nation?
- How can we create a transformational math vision and strong math culture in all our classrooms?
- What are the essential systems and structures for math success?



The Partnership's Four Components



VISION

Establish a Vision for Culture, Instruction, and Assessment Practices



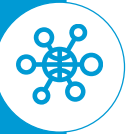
CULTURE

Continuous Improvement, Teacher Identity Work, and Use High-Quality Materials for Curriculum



SYSTEMS

Professional Learning and Coaching for School Leaders, Coaches, and Teachers; Observation and Feedback Systems



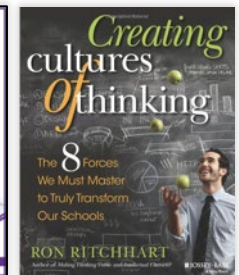
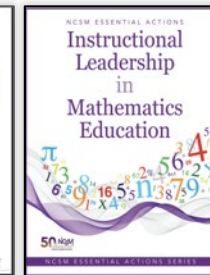
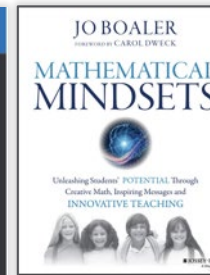
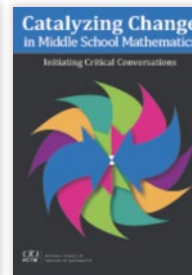
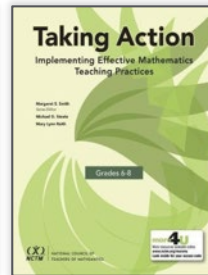
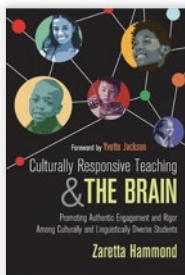
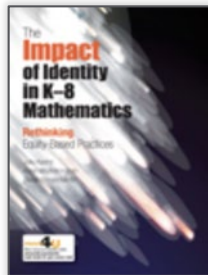
STRUCTURE

Teacher Teams and Collaboration, Master Schedule, and Adequate Planning Time



Our Vision for High-Quality Mathematics Teaching and Learning

Together we will create a network of classrooms with a culture of teaching and learning that engages all students with relevant, grade-level work and empowers students as **confident, independent learners, critical thinkers and problem solvers.**



The Partnership's Four Components



VISION

Establish a Vision for Culture, Instruction, and Assessment Practices



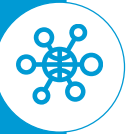
CULTURE

Continuous Improvement, Teacher Identity Work, and Use High-Quality Materials for Curriculum



SYSTEMS

Professional Learning and Coaching for School Leaders, Coaches, and Teachers; Observation and Feedback Systems




STRUCTURE

Teacher Teams and Collaboration, Master Schedule, and Adequate Planning Time



Audience Poll



I believe scaling high-quality curriculum is an essential part of equity work in my district/school.

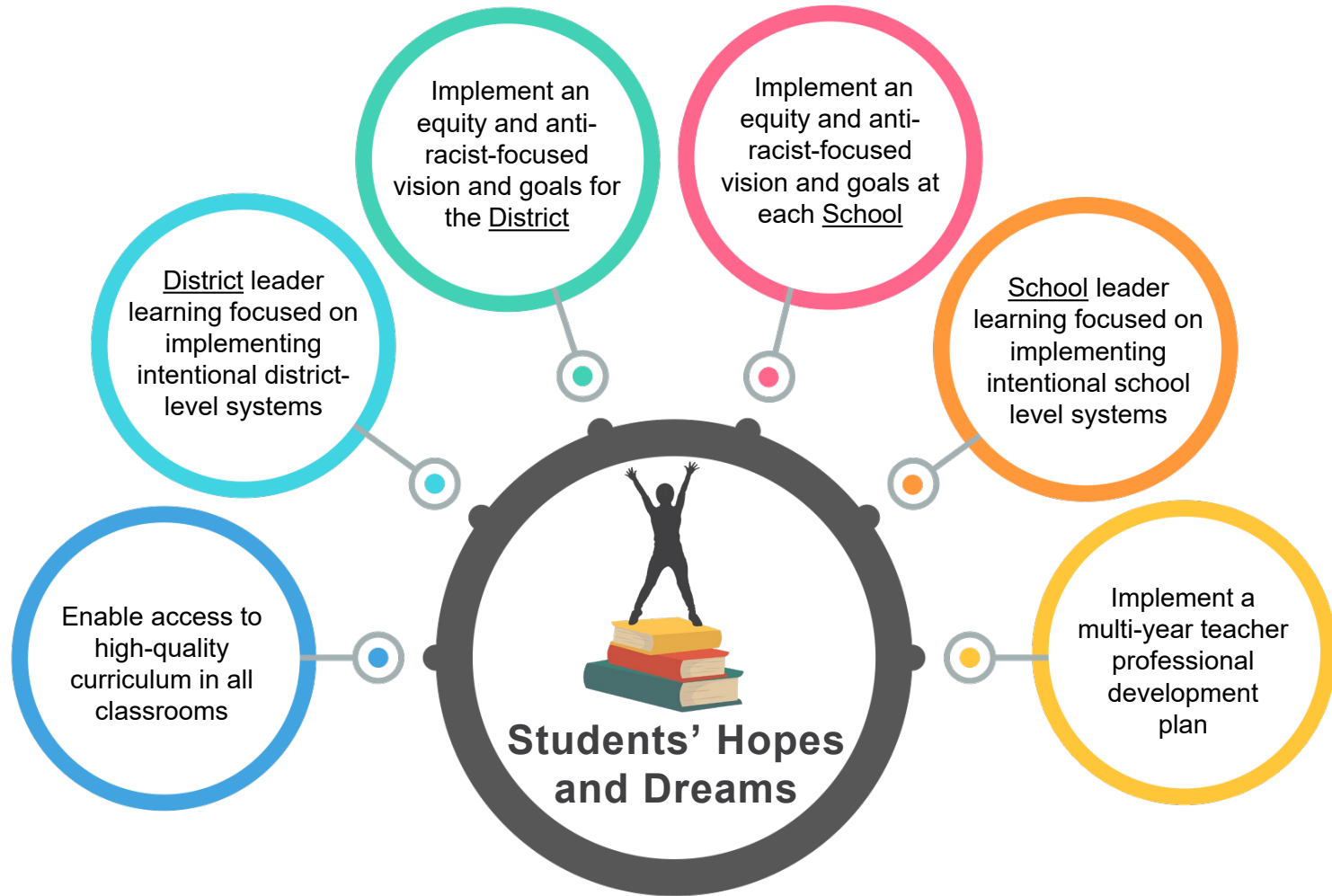
☒ _____

☐ _____

☐ _____

Ensuring Math is a Gateway

COHERENT SYSTEMS BUILDING IN AND AROUND SCHOOLS



Selecting Curriculum to Support Math as a Gateway

- Focus curriculum selections around your vision, which is ideally centered around students, equity and anti-racism
- Explore high-quality curriculum by using valued third-party orgs like edreports.org and calcurriculum.org
- Pilot and scale success in your context
- Provide incentivized choice for early implementers in pilots



Questions & Answers

Meet Our Panelists



MODERATOR

Ryan Smith

Chief External Officer
Partnership for Los Angeles Schools



Robert Berry

Professor of Mathematics
Education & Associate Dean of
Diversity, Equity and Inclusion
University of Virginia



Alison Yoshimoto-Towery

Chief Academic Officer
Los Angeles Unified School
District



Lacey Robinson

President and CEO
UnboundEd



Estela Lopez

Principal
Dolores Huerta Elementary
School

Questions & Answers

Connect With Us

