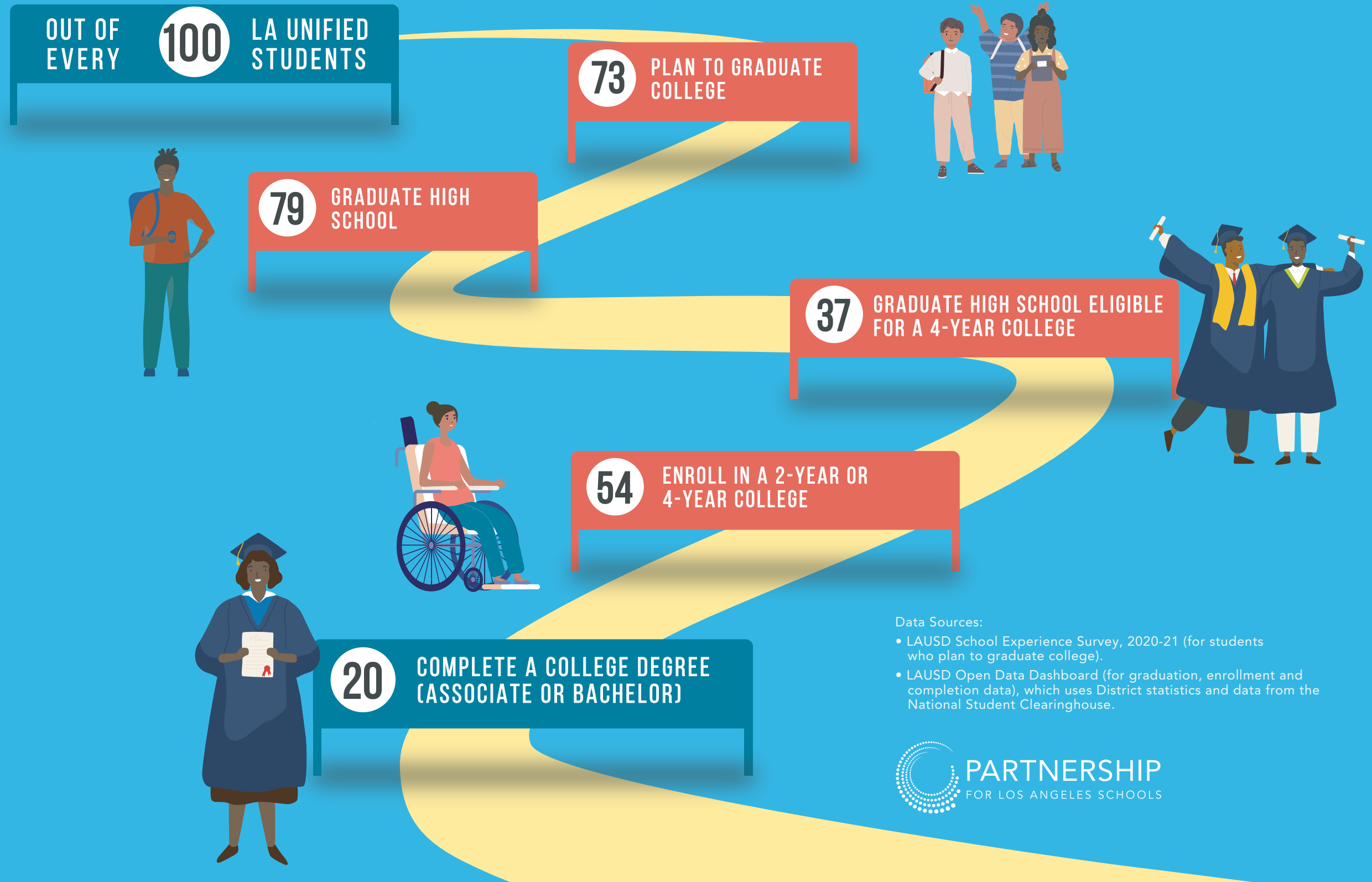


NAVIGATING THE PATH TO COLLEGE COMPLETION FOR LA STUDENTS

Despite significant progress, LA Unified students continue to experience a troubling gap between college aspiration and college completion: 73% of high school students aspire to complete a 4-year college degree, but only 20% complete a post-secondary degree of any kind. We must clear the path to college completion, including investing in resource equity, improving instructional practice, and deepening partnerships with families and communities. For more information, visit partnershipla.org/news/more-than-a-dream

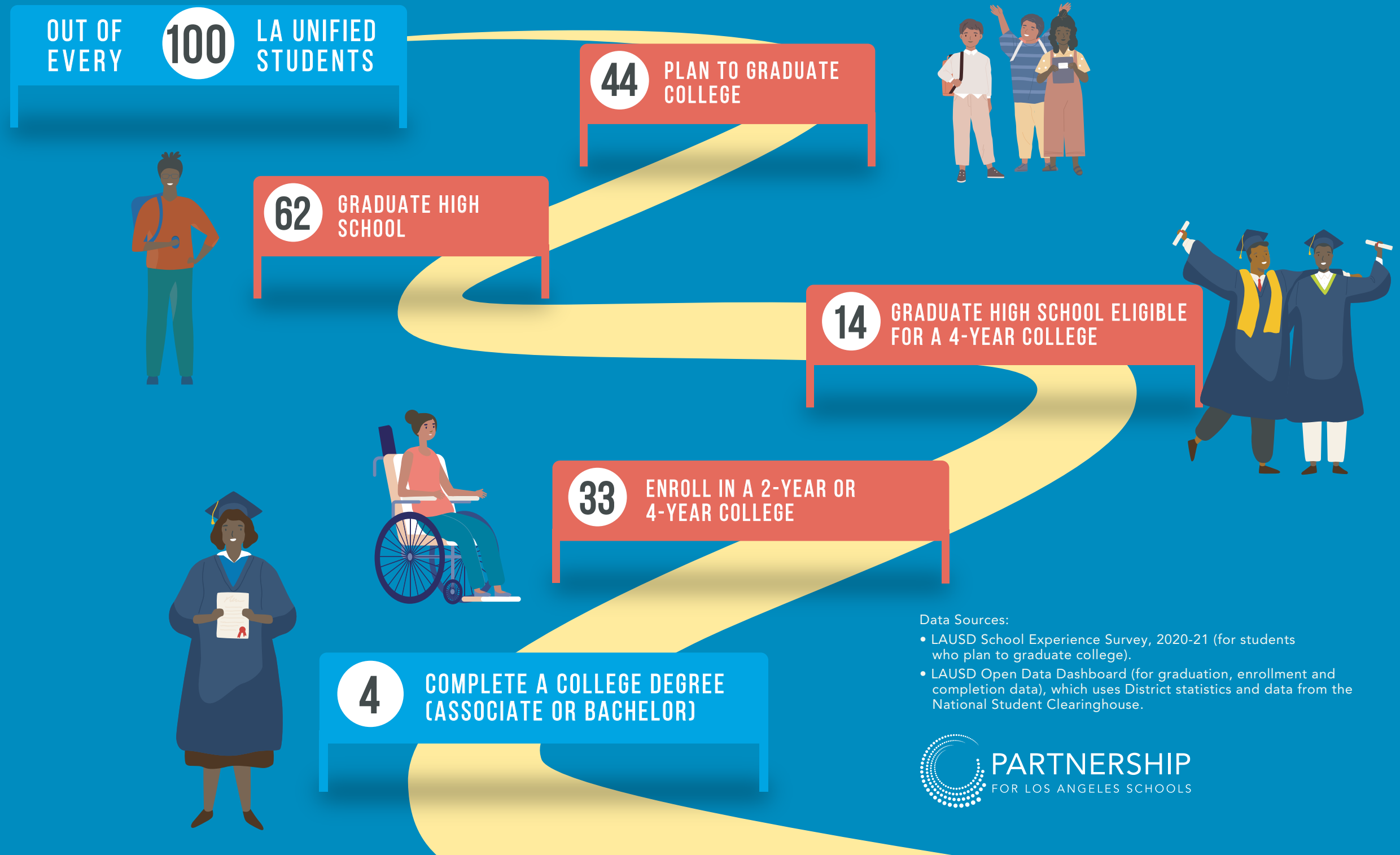


Data Sources:

- LAUSD School Experience Survey, 2020-21 (for students who plan to graduate college).
- LAUSD Open Data Dashboard (for graduation, enrollment and completion data), which uses District statistics and data from the National Student Clearinghouse.

NAVIGATING THE PATH TO COLLEGE COMPLETION FOR LA STUDENTS WITH DISABILITIES

Despite significant progress, LA Unified students continue to experience a troubling gap between college aspiration and college completion: 73% of high school students aspire to complete a 4-year college degree, but only 20% complete a post-secondary degree of any kind. We must clear the path to college completion, including investing in resource equity, improving instructional practice, and deepening partnerships with families and communities. For more information, visit partnershipla.org/news/more-than-a-dream

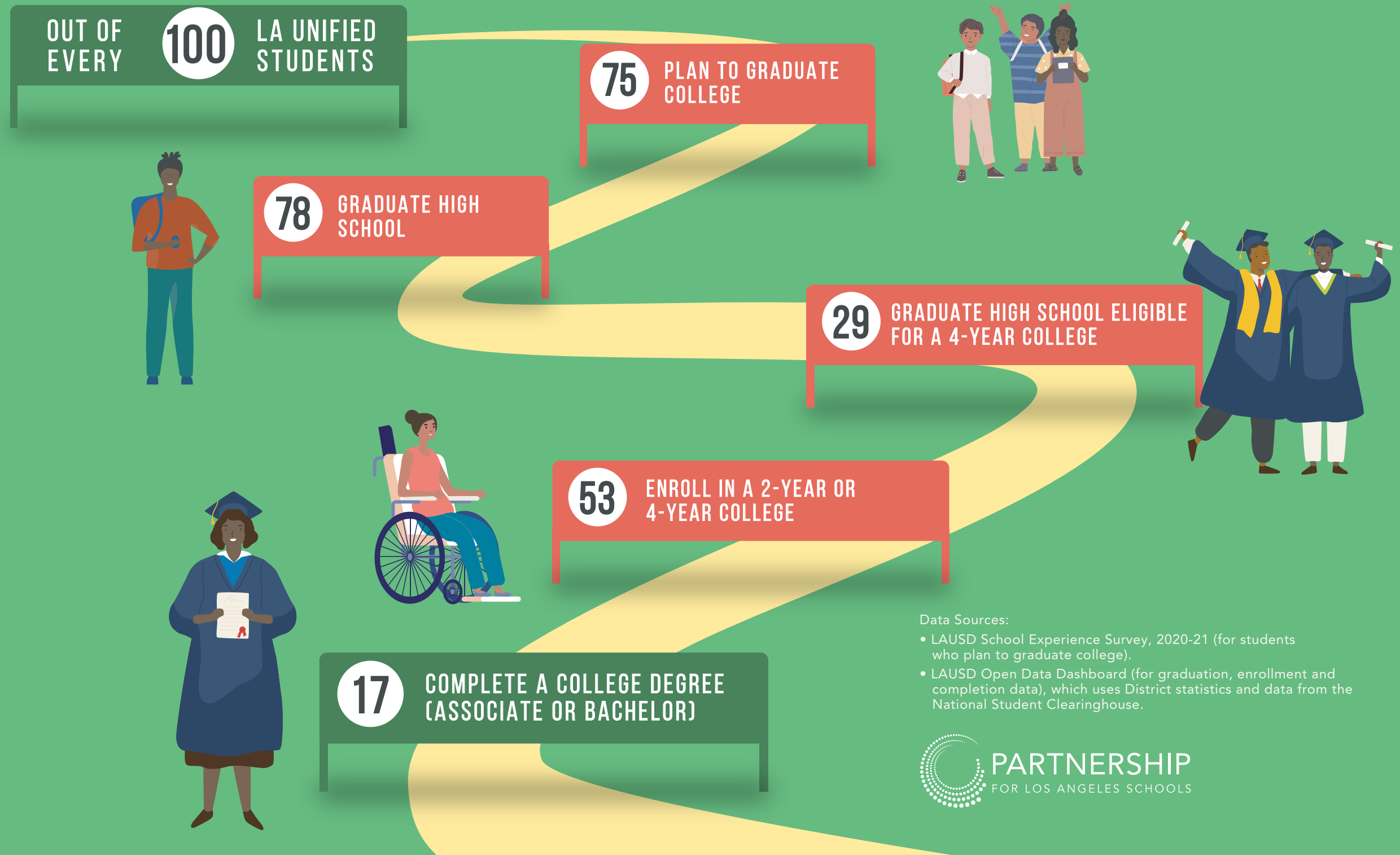


Data Sources:

- LAUSD School Experience Survey, 2020-21 (for students who plan to graduate college).
- LAUSD Open Data Dashboard (for graduation, enrollment and completion data), which uses District statistics and data from the National Student Clearinghouse.

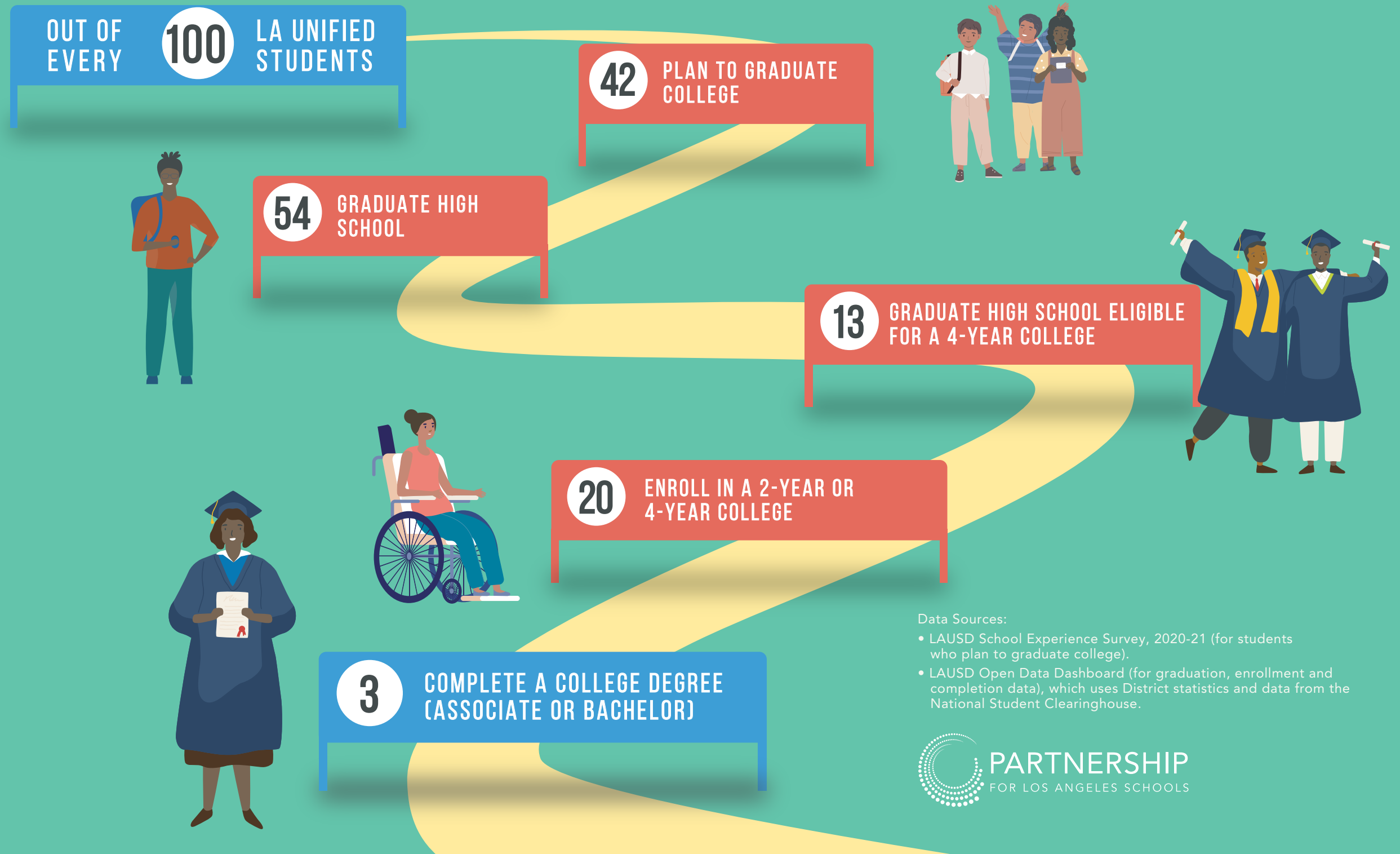
NAVIGATING THE PATH TO COLLEGE COMPLETION FOR AFRICAN AMERICAN LA STUDENTS

Despite significant progress, LA Unified students continue to experience a troubling gap between college aspiration and college completion: 73% of high school students aspire to complete a 4-year college degree, but only 20% complete a post-secondary degree of any kind. We must clear the path to college completion, including investing in resource equity, improving instructional practice, and deepening partnerships with families and communities. For more information, visit partnershipla.org/news/more-than-a-dream



NAVIGATING THE PATH TO COLLEGE COMPLETION FOR ENGLISH LEARNER LA STUDENTS

Despite significant progress, LA Unified students continue to experience a troubling gap between college aspiration and college completion: 73% of high school students aspire to complete a 4-year college degree, but only 20% complete a post-secondary degree of any kind. We must clear the path to college completion, including investing in resource equity, improving instructional practice, and deepening partnerships with families and communities. For more information, visit partnershipla.org/news/more-than-a-dream



Data Sources:

- LAUSD School Experience Survey, 2020-21 (for students who plan to graduate college).
- LAUSD Open Data Dashboard (for graduation, enrollment and completion data), which uses District statistics and data from the National Student Clearinghouse.

NAVIGATING THE PATH TO COLLEGE COMPLETION FOR LATINX LA STUDENTS

Despite significant progress, LA Unified students continue to experience a troubling gap between college aspiration and college completion: 73% of high school students aspire to complete a 4-year college degree, but only 20% complete a post-secondary degree of any kind. We must clear the path to college completion, including investing in resource equity, improving instructional practice, and deepening partnerships with families and communities. For more information, visit partnershipla.org/news/more-than-a-dream

